

**ZAHNER®**  
FLAT SEAM





Cover

**Church of the Resurrection**

Location: Leawood, Kansas

Design: Gould Evans Associates  
HGA Architects

Top Left:

**OHR O'Keefe Museum**

Location: Biloxi, Mississippi

Design: Frank Gehry Partners

Top Right:

**Taubman Museum**

Location: Roanoke, Virginia

Design: Randall Stout Architects

Middle Right:

**Rogers Place Arena**

Location: Edmonton, Alberta

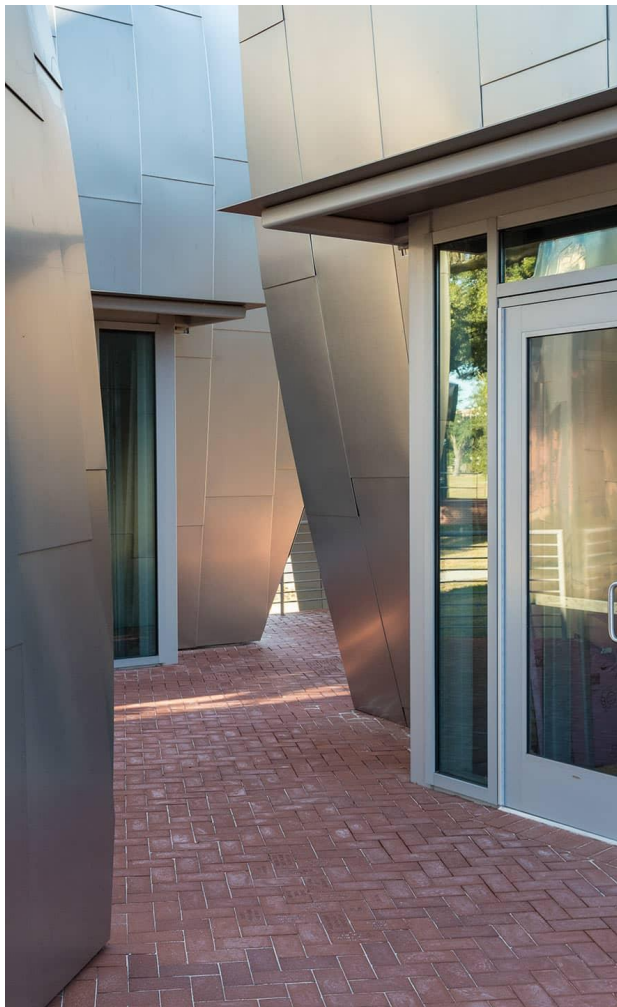
Design: HOK

Bottom:

**SUNY Campus Commons at New Paltz**

Location: New Paltz, New York

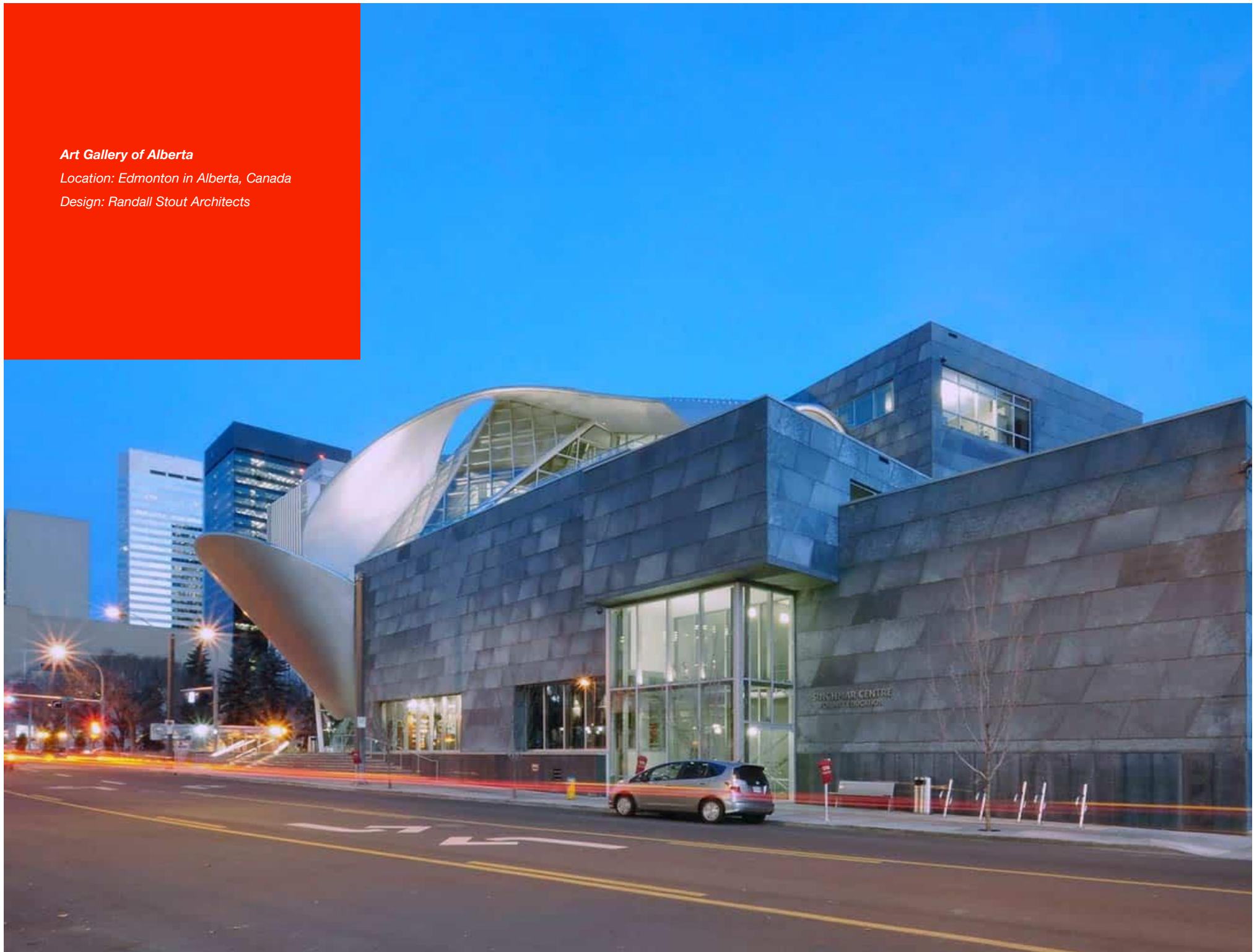
Design: ikon.5 architects



**Art Gallery of Alberta**

*Location: Edmonton in Alberta, Canada*

*Design: Randall Stout Architects*





## Zahner Flat Seam: Elevating both large-scale cladding and detailed architectural features

Flat Seam offers lasting materiality with a sleek, low-profile appearance across flat, angular, and curved forms.

You can choose from Zahner's full range of architectural metals — including copper, zinc, stainless steel, aluminum, and steel — with premium surface treatments like Star Blue™ copper, Hunter™ zinc and Angel Hair® stainless steel. Flexible panel sizing, joint staggering, and pattern orientation options allow you to tailor the aesthetic to your project.

Flat Seam panels feature hemmed edges that add strength and maintain clean, crisp lines. Panels are secured to a continuous substrate using stainless steel clips and interlocking seams, eliminating the need for complex built-up support systems. The system is engineered for easy field modification, allowing installers to adapt to real-world conditions without sacrificing quality or appearance.

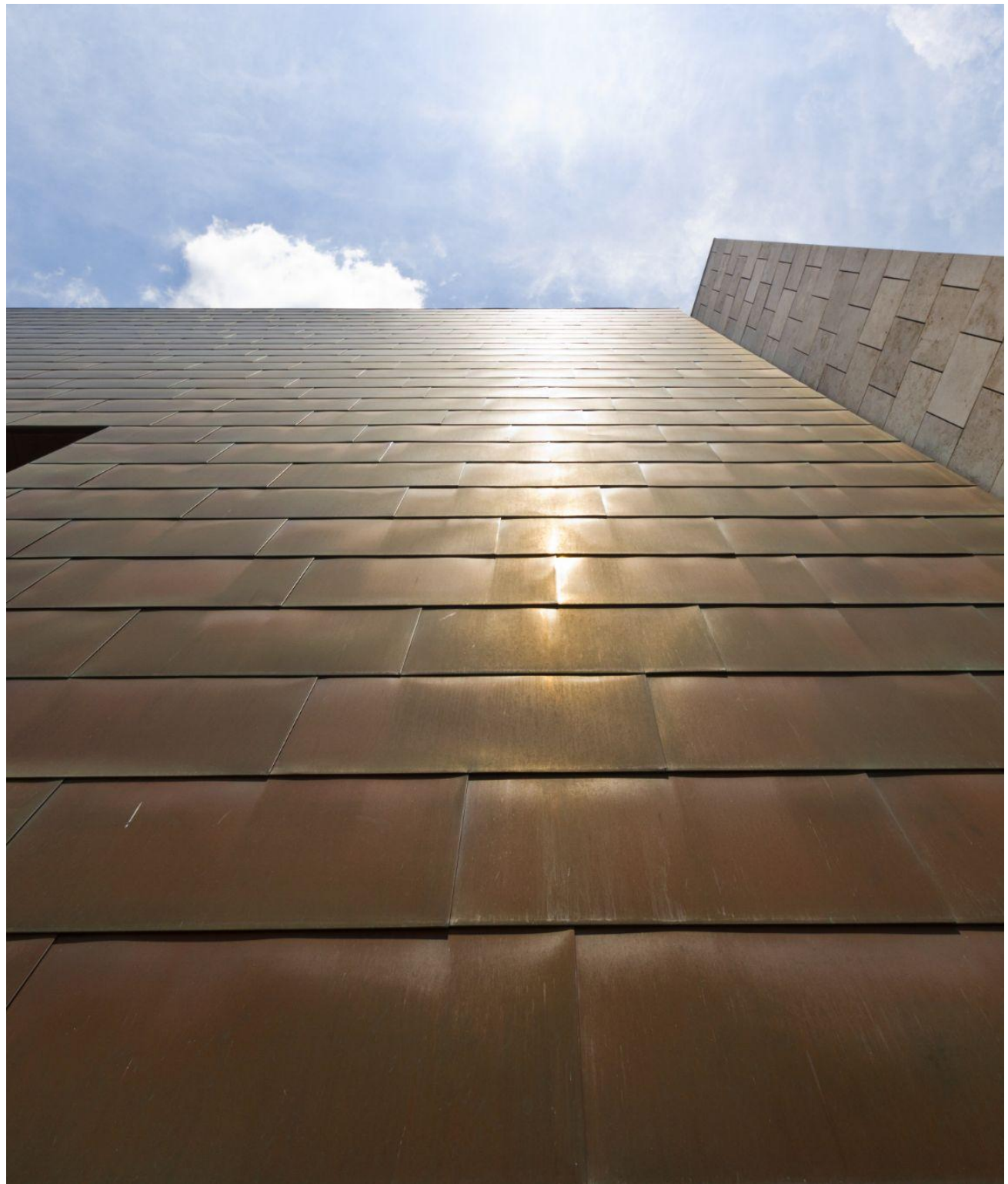
*Right:*

***National Underground Railroad  
Freedom Center***

*Location: Cincinnati, Ohio*

*Design: Blackburn Architects*

*Bora Architects*



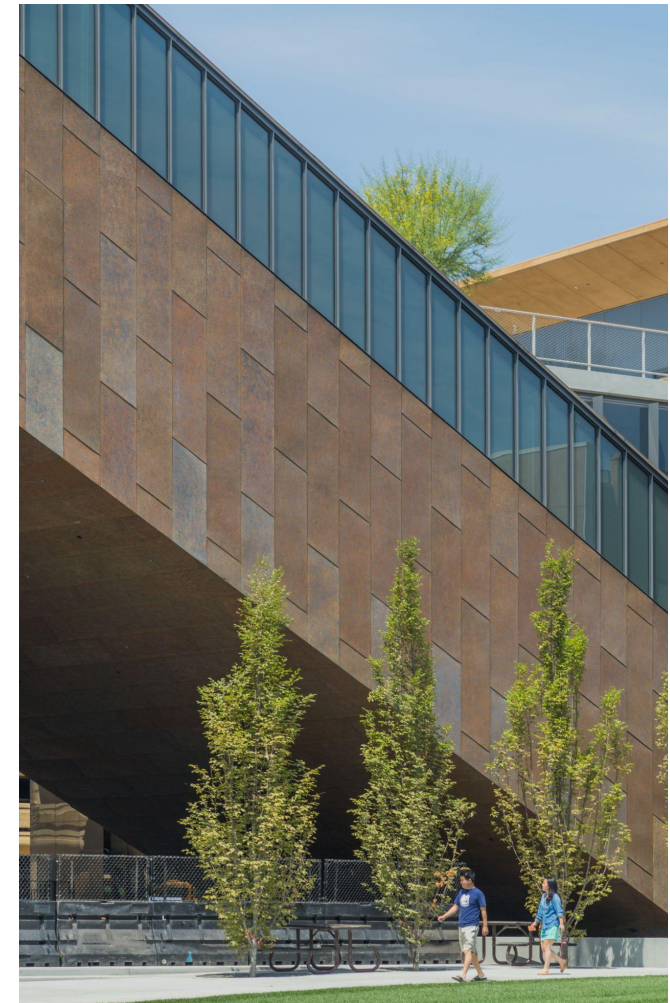
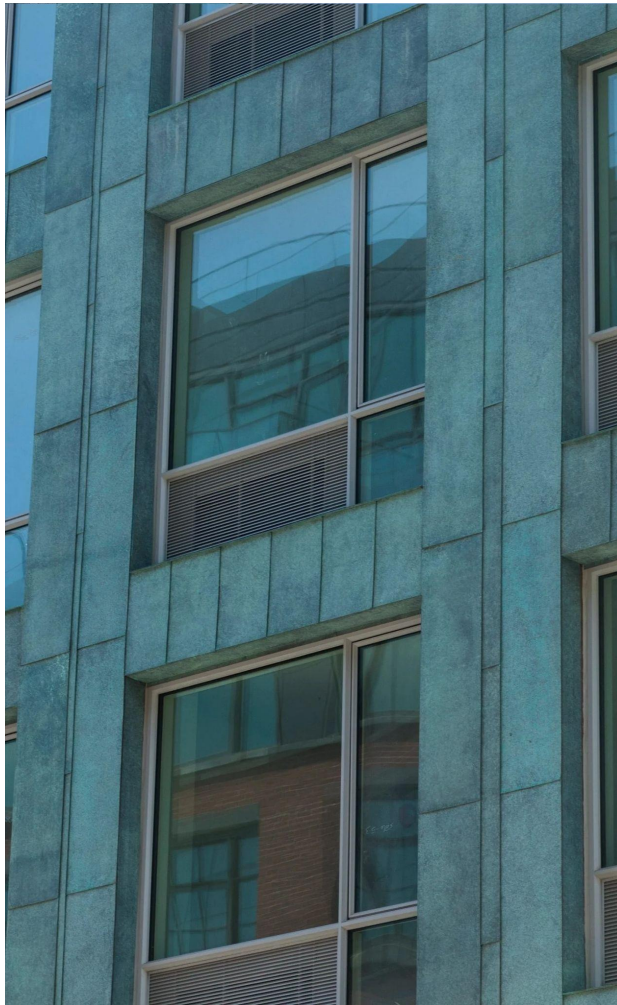


Top Left: **174 North Eleventh**  
Location: Brooklyn, New York  
Design: Kutnicki Bernstein Architects

Top Right: **BOK Center**  
Location: Tulsa, Oklahoma  
Design: Pelli Clarke Pelli

Bottom Left: **2100 L Street**  
Location: Washington D.C.  
Design: Jan Hendrix  
Akridge

Bottom Right: **McMurtry Building**  
Location: Stanford, California  
Design: Diller Scofidio + Renfro  
Boora Architects

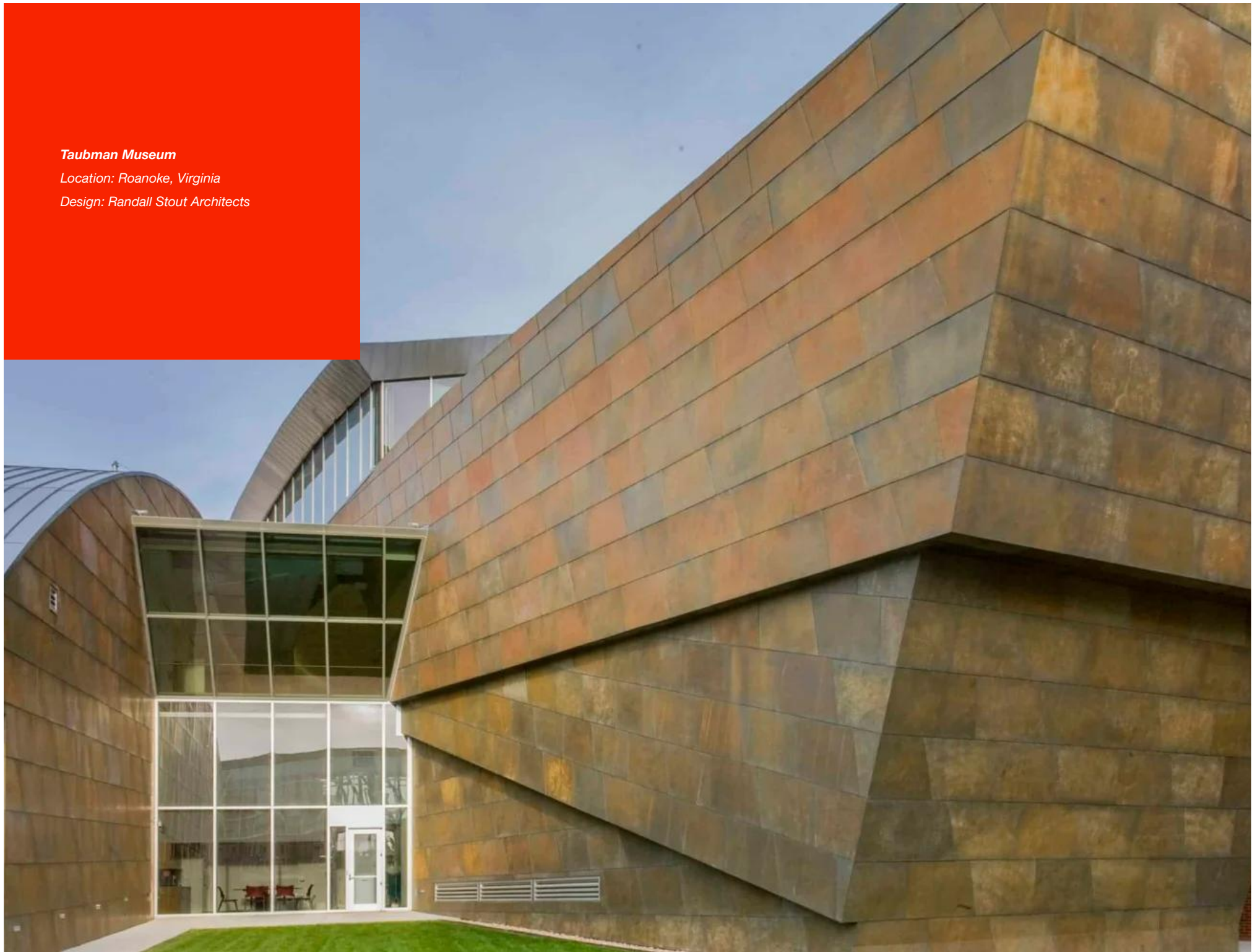




***Taubman Museum***

*Location: Roanoke, Virginia*

*Design: Randall Stout Architects*



**ZAHNER®**

1400 East 9th Street

Kansas City, MO 64106 USA

[info@azahner.com](mailto:info@azahner.com)

+1 (816) 474-8882 *phone*

+1 (816) 474-7994 *fax*