

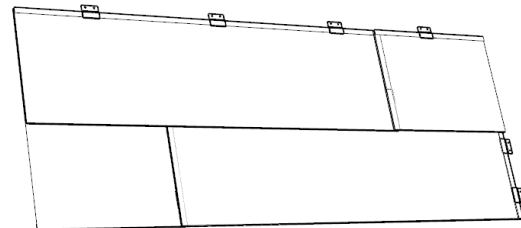
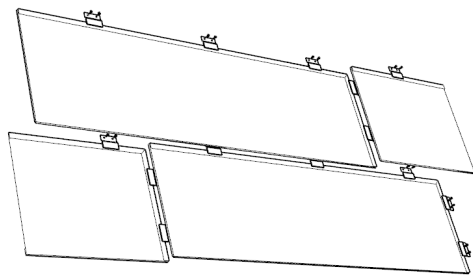


Flat Seam system offers a uniquely flexible metal facade system, compatible with most Zahner Surface offerings in addition to other common metals and finishes, providing an expansive pallet of materials and finishes from which to select for your project.

Zahner's extended design variations allow for application on not only planar geometry, but also curved and dual curved geometry. Furthermore, utilizing our extended lap variation which includes additional water proofing measures, our system is also suitable for lower sloped roof applications.

Applications:

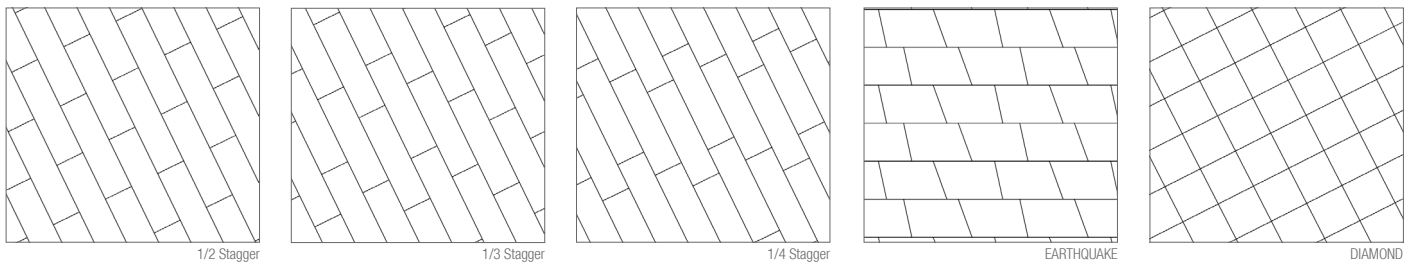
- Interior and exterior installations
- New Construction, retrofit, and add-on



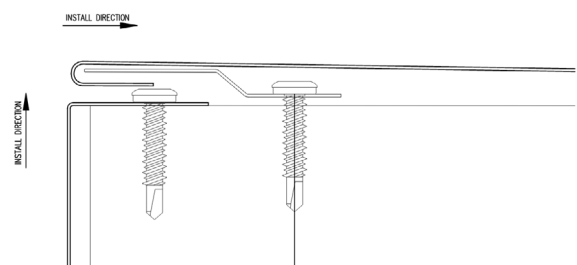
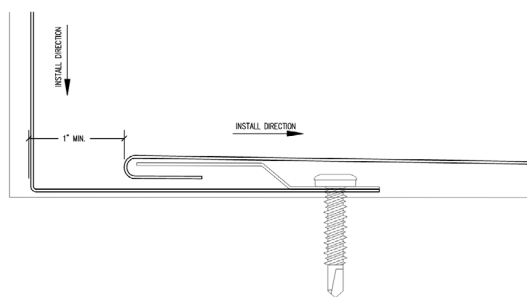
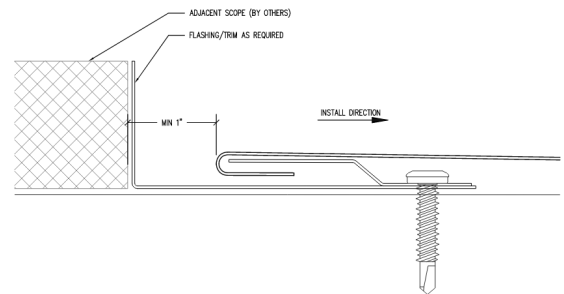
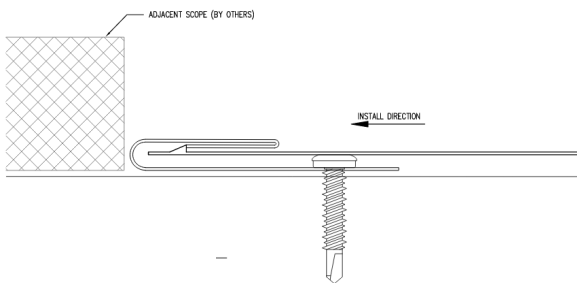
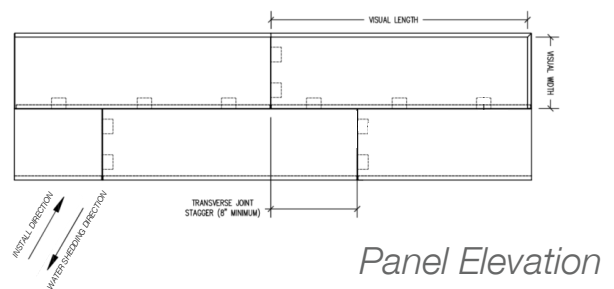
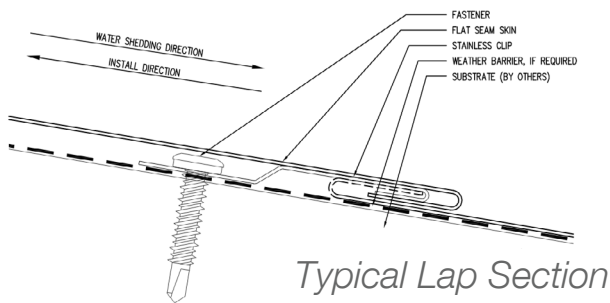
*Rectangular panels shown are for reference.
Other unique profiles are available by contacting Zahner.*

Flat Seam Material and Finish Offerings:

Oscura™ Blackened Steel → Patinated Steel INTERIOR ONLY	Spectura™ Steel → Iridescent Finish on Steel INTERIOR ONLY	Angel Hair® → Diffuse finish on Stainless Steel	Painted Aluminum →	Anodized Aluminum → Protection for Aluminum Alloys
Dirty Penny™ → Preweathered Patina on Copper	Star Blue™ → Preweathered Patina on Copper	Baroque Zinc™ → Preweathered Patina on Zinc	Hunter Zinc™ → Preweathered Patina on Zinc	Roano Zinc™ → Preweathered Patina on Zinc



Typical Panel Patterns



System Weight: 2-4.5lbs / sq. ft. depending on specific configuration.

Panel sizes and material gauges meet or exceed the performance of SMACNA flat seam panels.

If project specific engineering analysis is required this can be provided for an added cost.

Material	Copper	Stainless Steel	Zinc	Aluminum
Available Finishes	Star Blue Copper	Angel Hair®	Hunter	Painted or Anodized
	Dirty Penny Copper		Roano	
			Baroque	
Material Thickness	24oz.	22Ga.	.8mm	.04"
Panel Face Width x Length (Max)	20" x 28"			