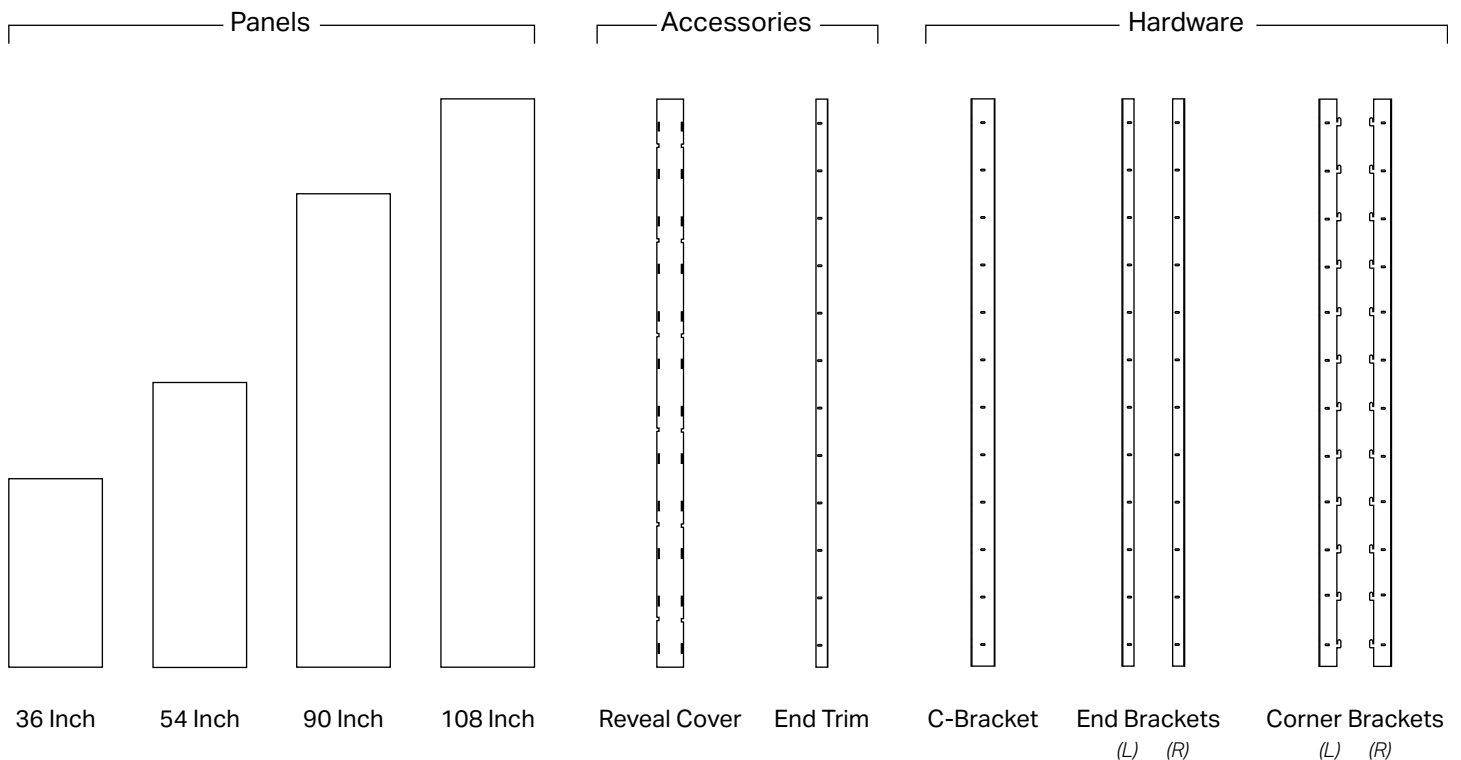


# Moda™ Panel System

Zahner's Moda Panel System allows designers and architects to leverage Zahner's deep knowledge of metallurgy and fabrication by providing the canvas for a palette of authentic metal patinas, mechanical finishes, and original patterns and designs. Available in four mix-and-matchable panel sizes, Moda offers a seemingly endless number of unique arrangements, while remaining quick and easy to specify into a variety of architectural projects.

## SYSTEM COMPONENTS

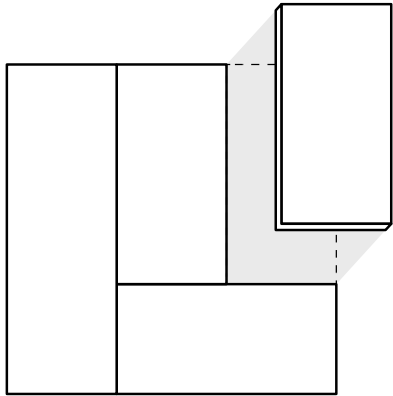
Moda panels are available in four sizes that install onto an adaptable hardware system which enables a variety of panel layouts. Optional accessories include reveal covers and trim pieces for hiding fasteners, as well as hardware components to prevent the unwanted removal of panels.



## SYSTEM FEATURES

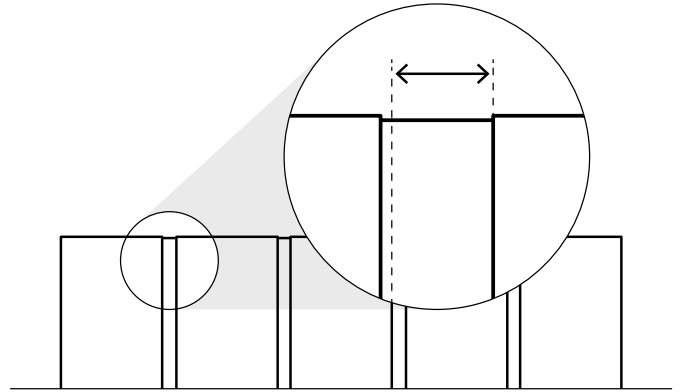
The Moda system has been carefully designed to capitalize on the benefits of mass production, while remaining flexible enough to allow architects, designers, and specifiers to realize their unique visions by taking advantage of the following features:

### Modular



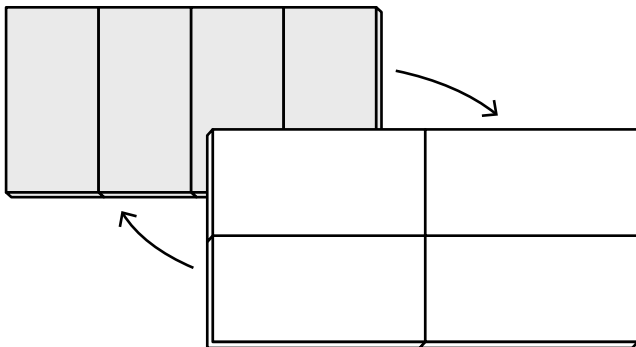
Customize your space by creating any number of panel arrangements. Rotate any panel on 90 degree increments, combine multiple panel sizes, or mix-and-match materials and patterns for entirely unique installations.

### Adaptable



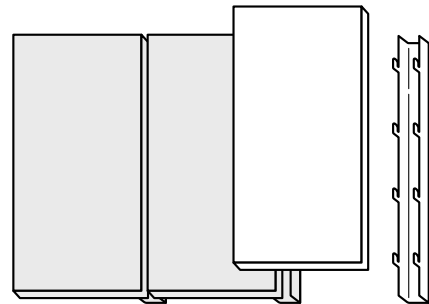
Moda arrays can be installed with varying vertical reveal widths to better fit any wall. Moda features reveals ranging from .25" up to 3" without revealing any hardware components or wall fasteners.

### Reconfigurable



Moda panels can be easily uninstalled, rearranged, and reinstalled to freshen up a space. This helps to reduce the carbon footprint in the event of future renovations. It also means that panels can be replaced and added as necessary, without removing the entire system.

### Simple Install



Once the Moda hardware is fastened to your substrate and brought into alignment, panels are easily hung using the hook-and-slot features of the carefully designed system. This makes Moda panels simple to install, align, and even remove if maintenance is required.

# STANDARD PRODUCTS

## PRODUCT OPTIONS

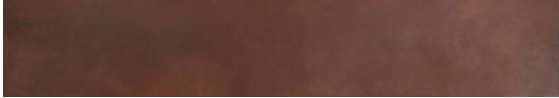
Moda panels are available in nine unique Zahner Surfaces.

Stainless Steel

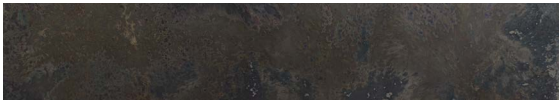


Angel Hair® Stainless Steel

Steel



Solanum Steel™



Oscura™ Blackened Steel (Interior Only)

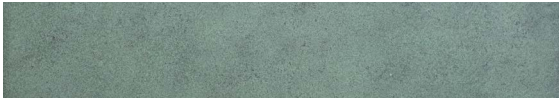


Spectura™ Steel (Interior Only)

Copper



Dirty Penny™ Copper

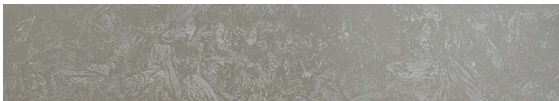


Star Blue™ Copper

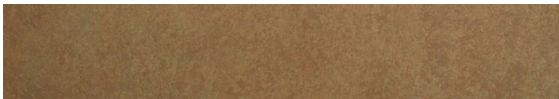
Zinc



Baroque Zinc™



Hunter Zinc™



Roano Zinc™

## ORDERING MODA

Order Moda in just a few mouse clicks!

1. Determine the type and quantity of Moda panels, hardware, and accessories that your project requires.
2. Enter your order info. Click [here](#) or visit [www.azahner.com/products/quote-request](http://www.azahner.com/products/quote-request) to submit the information we need to provide you with a complete quote.
3. A Zahner Product Team member will deliver your personalized quote within 2 business days.
4. If it looks good, e-sign your quote to submit your order.

## CREDIT APPROVAL

Before your order can be accepted and processed, a credit application process must be completed.

To initiate the credit approval process, please email [AR@azahner.com](mailto:AR@azahner.com) and provide the following information:

- Business name and address
- DUNS number

For more information on a specific finish, please refer to the Product Spec Sheet for that Surface, available on the Zahner website (<https://www.azahner.com/products/surfaces>).

# STANDARD PRODUCTS

## MODA SYSTEM SPECIFICATIONS

	36 Inch	54 Inch	90 Inch	108 Inch
<b>Panel Height, in</b>	35.75	53.75	89.75	107.75
<b>Panel Width, in</b>	17.75			
<b>Panel Depth, in</b>	2.26			
<b>System Depth, in</b>	3.25			
<b>Approximate Panel Weight, lbs</b>				
Angel Hair Stainless Steel	11	16	26	32
Solanum Steel	16	24	39	47
Oscura Blackened Steel	13	19	32	38
Spectura Steel	13	19	32	38
Dirty Penny Copper	13	19	32	38
Star Blue Copper	13	19	32	38
Baroque Zinc	11	16	27	32
Hunter Zinc	11	16	27	32
Roano Zinc	11	16	27	32
<b>Horizontal Reveal Height, in</b>	0.25			
<b>Vertical Reveal Width, in</b>	0.25 - 3.00*			
<b>Minimum Clearance Above Top Panel, in</b>	1.00			
<b>Hardware Height, in</b>	107.63			
<b>Reveal Cover Height, in</b>	107.75			

\*vertical reveal width is determined by system install.

For additional information on product dimensions, and system part relationships, please refer to the [Moda Detail Drawing Set](#), available on the Zahner website.

# Moda™ Panel System

**CUSTOMER INFORMATION**

\_\_\_\_\_  
*First Name*                      *Last Name*                      *Customer ID*

\_\_\_\_\_  
*Email*                                      *Company*

**ORDER INFORMATION**

Indicate the required part quantities below. Please reference the Moda detail set when making your selection.

	<u>Panels</u>				<u>Accessory</u>
	<b>36 Inch</b>	<b>54 Inch</b>	<b>90 Inch</b>	<b>108 Inch</b>	<b>Reveal Cover</b>
Angel Hair® Stainless Steel	_____	_____	_____	_____	_____
Solanum Steel™	_____	_____	_____	_____	_____
Oscura™ Blackened Steel	_____	_____	_____	_____	_____
Spectura™ Steel	_____	_____	_____	_____	_____
Dirty Penny™ Copper	_____	_____	_____	_____	_____
Star Blue™ Copper	_____	_____	_____	_____	_____
Baroque Zinc™	_____	_____	_____	_____	_____
Hunter Zinc™	_____	_____	_____	_____	_____
Roano Zinc™	_____	_____	_____	_____	_____

	<u>Hardware</u>				
	<b>C-Bracket</b>	<b>End Bracket (L)</b>	<b>End Bracket (R)</b>	<b>Corner Bracket (L)</b>	<b>Corner Bracket (R)</b>
5052-H32 Aluminum	_____	_____	_____	_____	_____

	<u>Additional Accessories</u>	
	<b>End Trim</b>	<b>Locking Hook</b>
5052-H32 Aluminum	_____	_____