



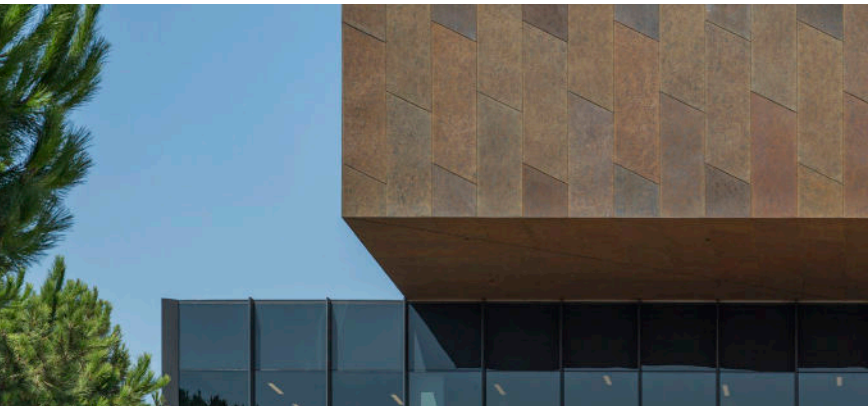
**ZAHNER®**

**BAROQUE ZINC**  
PREWEATHERED ZINC PATINA

**PICTURED:** MCMURTRY BUILDING DESIGNED BY DILLER SCOFIDIO + RENFRO  
CUSTOM BAROQUE ZINC ON CUSTOM PANELING SYSTEM BY ZAHNER.



# BAROQUE ZINC

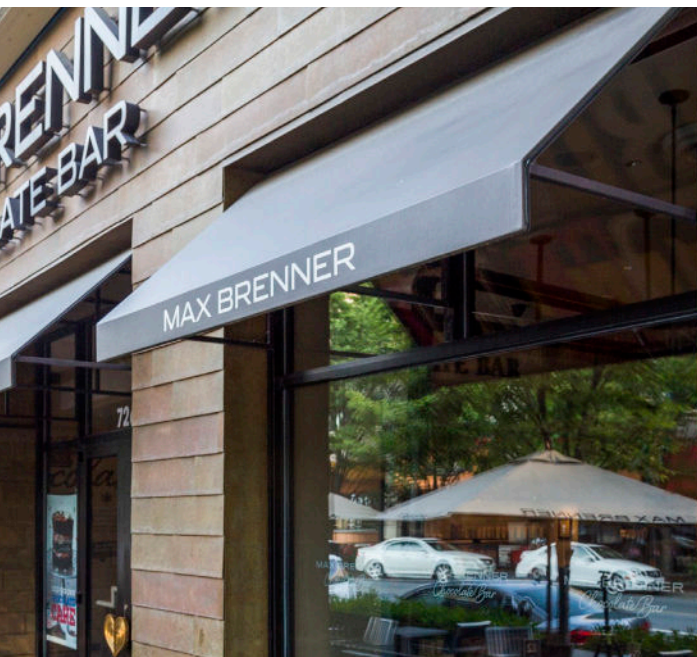
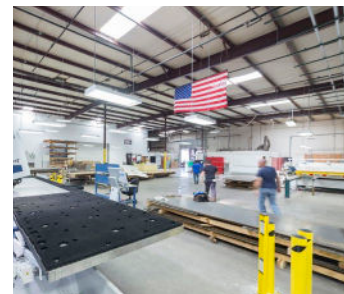


## Prestige Material Zinc from Zahner

Baroque Zinc is a lead-free preweathered zinc with custom patina on zinc-alloy sheet metal. The sophisticated material is part of Zahner's line of raw patinated materials which are designed to age like tanned leather and vintage wine. The result is a look that can function both for contemporary as well as historic aesthetics.

## Meeting EPA Standards for Patinated Zinc

Baroque Zinc is produced in Zahner's award-winning, EPA compliant facility. Patina effluent is properly captured and disposed of in compliance with local, state, and federal regulations. This ensures the health and safety for the families who work at Zahner, as well as the community at large in which it is made.



## Exterior and Interior Applications

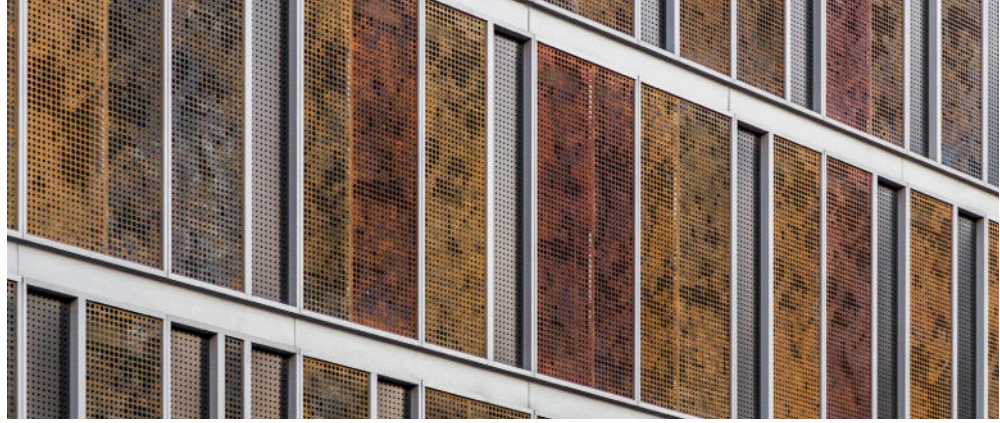
Baroque Zinc is durable against the exterior environment, and is also durable in the interior and pedestrian environments. The material resists fingerprints and scratches.

## Change over Time

The Baroque Zinc surface patina is highly stable, and will not rub off, stain or erode. The material will, however, continue to change over time. The patina is a mineralized compound, embedded in the surface of the zinc sheet metal itself. This surface of this protective barrier will continue to react with the atmosphere, changing its color and tone as it oxidizes.

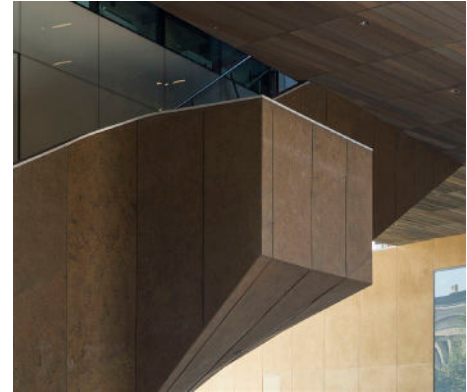
Above: Max Brenner has several international locations clad in Zahner Baroque Zinc.

**Right:** The Children's Mercy Hospital in Richmond, VA features a number of Zahner-patinated materials on its facade, including Baroque Zinc. **Below:** The McMurtry Building in Stanford, California uses Zahner Baroque Zinc on its exterior facade.



### Patina vs. Paint

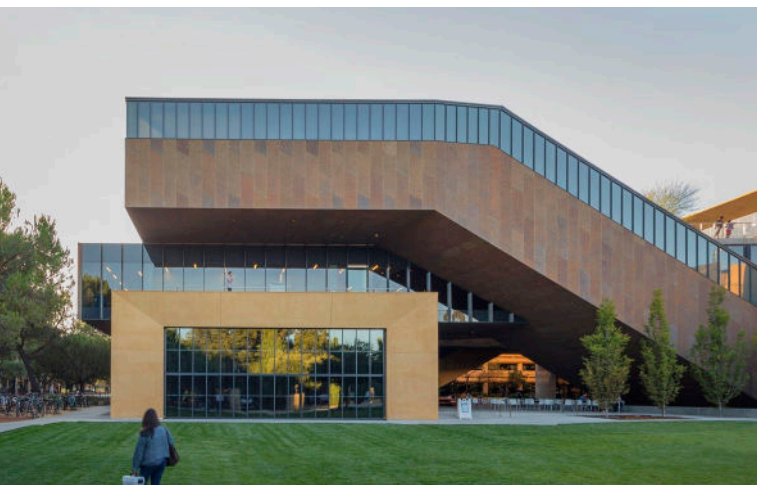
Surface patina should not be confused with paint. Patina is a mineralized oxide on metal that is self-limiting (rust, for instance, is not self-limiting because it will continue to eat through a surface). It is a reaction to the elements that in turn provides a protective barrier from the elements.



### Designed to Age and Endure

Baroque Zinc provides a protective coating on zinc, a material which is already highly rated for its durability. When properly installed, a zinc roof or wall system can last up to 100 years. In Europe, where zinc use is most prevalent, roofs, gutters and railings have been known to last for generations.

After their "useful life," these products are then recovered and reused at an impressive rate. In Western Europe, for example, an extraordinary 90 percent of rolled zinc is recovered from roofs and rainwater systems every year, amounting to the equivalent of 110,230 tons (99,999 metric tons).



**ZAHNER®**

[info@azahner.com](mailto:info@azahner.com)

**A. Zahner Company**

[www.azahner.com](http://www.azahner.com)

**Kansas City Facility**

1400 E. 9th Street

Kansas City, Missouri 64106

United States of America

p +1 (816) 474-8882

f +1 (816) 474-7994

**Dallas-Area Facility**

2860 Alouette Dr.

Grand Prairie, TX 75052

United States of America

p +1 (469) 348-2000

f +1 (469) 348-2003