

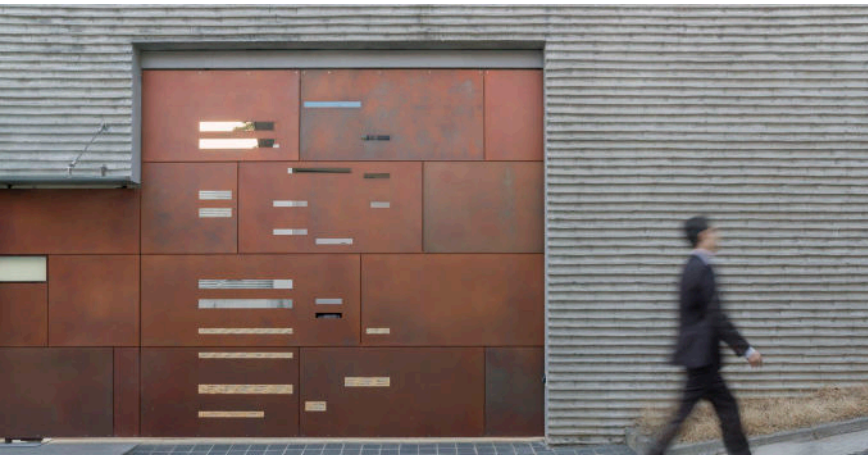


ZAHNER®

DIRTY PENNY

PREWEATHERED COPPER PATINA

DIRTY PENNY™



Prestige Material Copper from Zahner

Dirty Penny™ Copper a lead-free material with custom patina on copper-alloy sheet metal. The sophisticated material is part of Zahner's line of raw patinated materials which are designed to age like tanned leather and vintage wine. The result is a look that can function both for contemporary as well as historic aesthetics.



Meeting EPA Standards for Patinated Copper

Dirty Penny Copper is produced in Zahner's award-winning, EPA compliant facility. Patina effluent is properly captured and disposed of in compliance with local, state, and federal regulations. This ensures the health and safety for the families who work at Zahner, as well as the community at large in which it is made.

Designed to Age and Endure

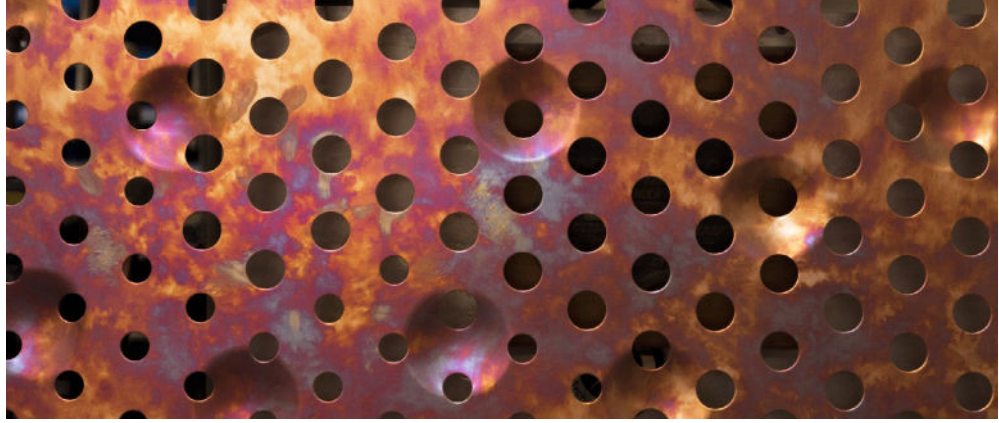
An iridescent surface, the Dirty Penny copper appearance benefits from a microfilm which develops on the exterior layer of the material. The oxidized layer is like a living protecting barrier which grows and evolves as it further oxidizes.

For exteriors, this appearance will change over time. If sealed and maintained, it is possible for a custom copper patina such as Dirty Penny to maintain its iridescent luster. As an interior surface, the Dirty Penny copper's unique finish can last indefinitely, especially if the material is sealed.



Above: Dirty Penny application for the Festival of the Arts in Laguna Beach, California.

Top: The Daeyang Gallery in Seoul, Korea.



Patina vs. Paint

Surface patina should not be confused with paint. Patina is a mineralized oxide on metal that is self-limiting (rust, for instance, is not self-limiting because it will continue to eat through a surface). It is a reaction to the elements that in turn provides a protective barrier from the elements.



Exterior and Interior Applications

Dirty Penny copper can be used on interior and exterior applications. The patina will not rub off. However, over time, the patina appearance will continue to change. As the mineralized patina reacts with the atmosphere, it will darken and change in tone and contrast as it further oxidizes.



ZAHNER®

info@azahner.com

A. Zahner Company

www.azahner.com

Kansas City Facility

1400 E. 9th Street

Kansas City, Missouri 64106

United States of America

p +1 (816) 474-8882

f +1 (816) 474-7994

Dallas-Area Facility

2860 Alouette Dr.

Grand Prairie, TX 75052

United States of America

p +1 (469) 348-2000

f +1 (469) 348-2003